

How to place the Map

page 1

* The software is constantly updated. And may contain features not documented in this document.

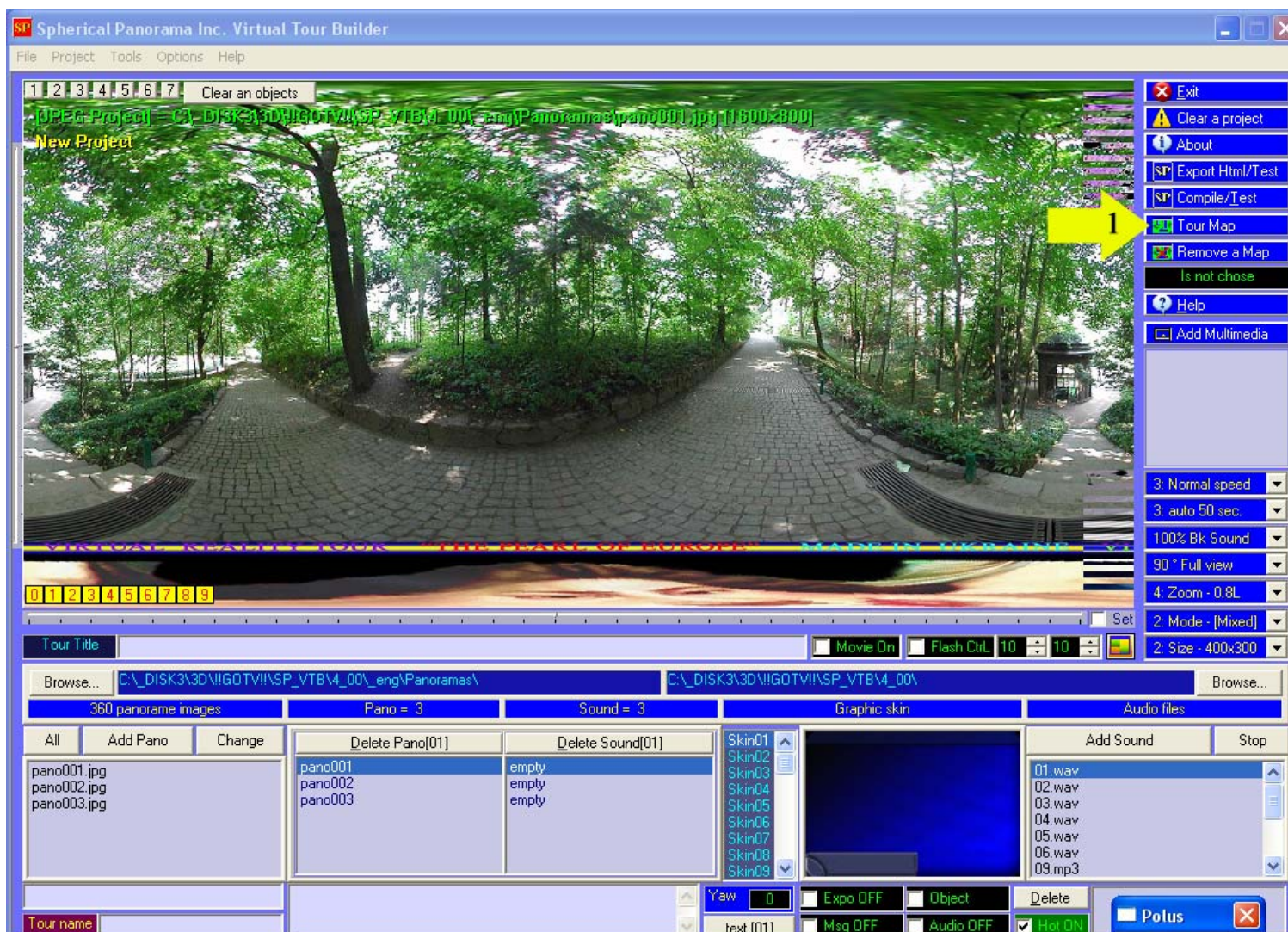
This document explains the installation and operation of Spherical Panorama Virtual Tour Builder. It is intended for both newbies and professionals who engage in virtual tour building.

How to place the Map

First of all, you need to add all panoramas to a project.

See "Yellow" marked areas (see attached images):

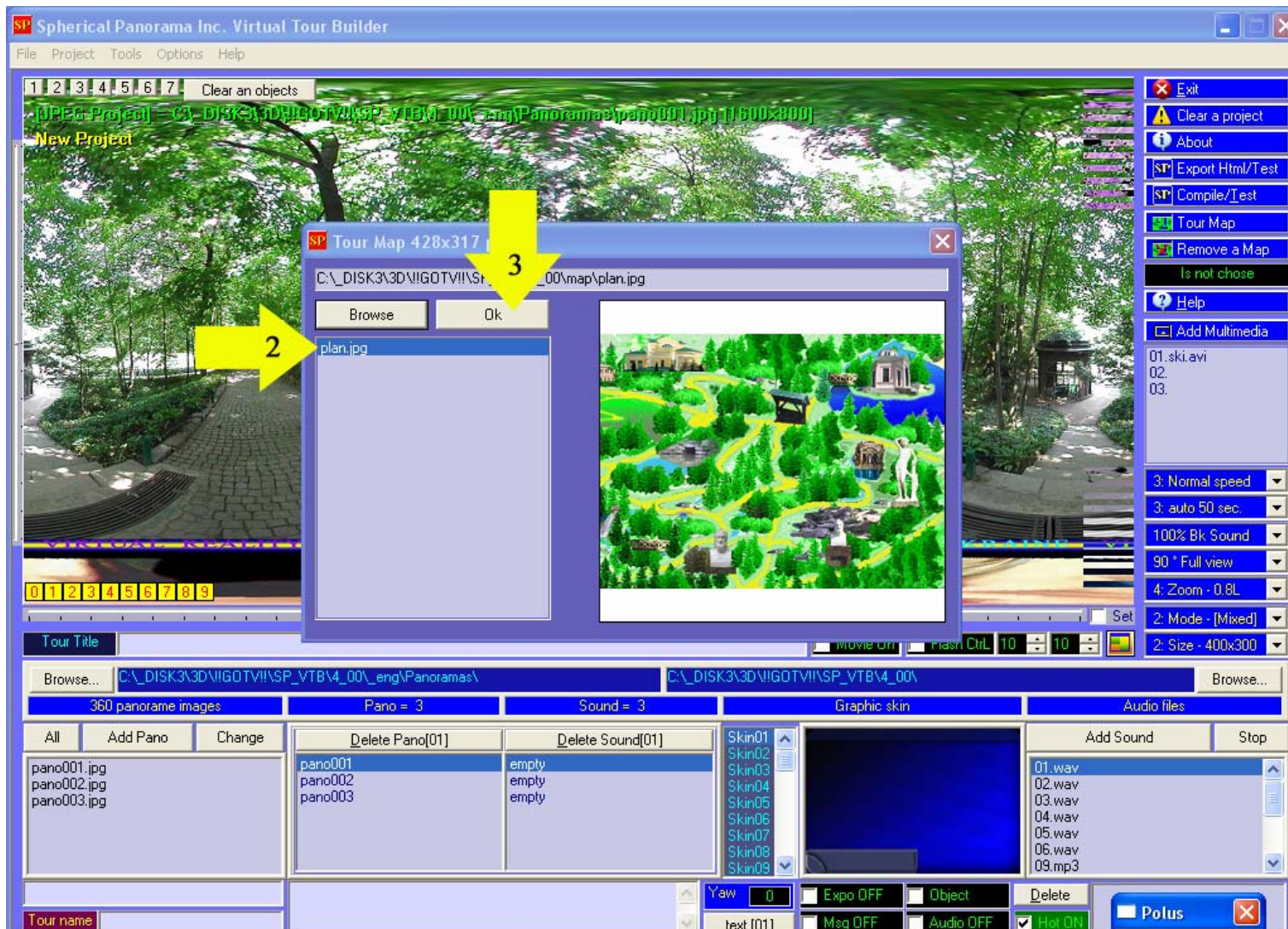
1. Press the button "Tour Map"



How to place the Map

page 2

3. Choose any Map image from current folder.
4. Press the button “Ok”



How to place the Map

page 3

4. Choose any place on the map (by mouse) and press the left mouse button for attaching current panorama to the Map.
5. The same for next panorama of virtual tour
- ...
6. Press the button “Ok”, when you attached all necessary panoramas to the Map.

