

## How to place AVI, MPG movie in transition (for executable only)

page 1

\* The software is constantly updated. And may contain features not documented in this document.

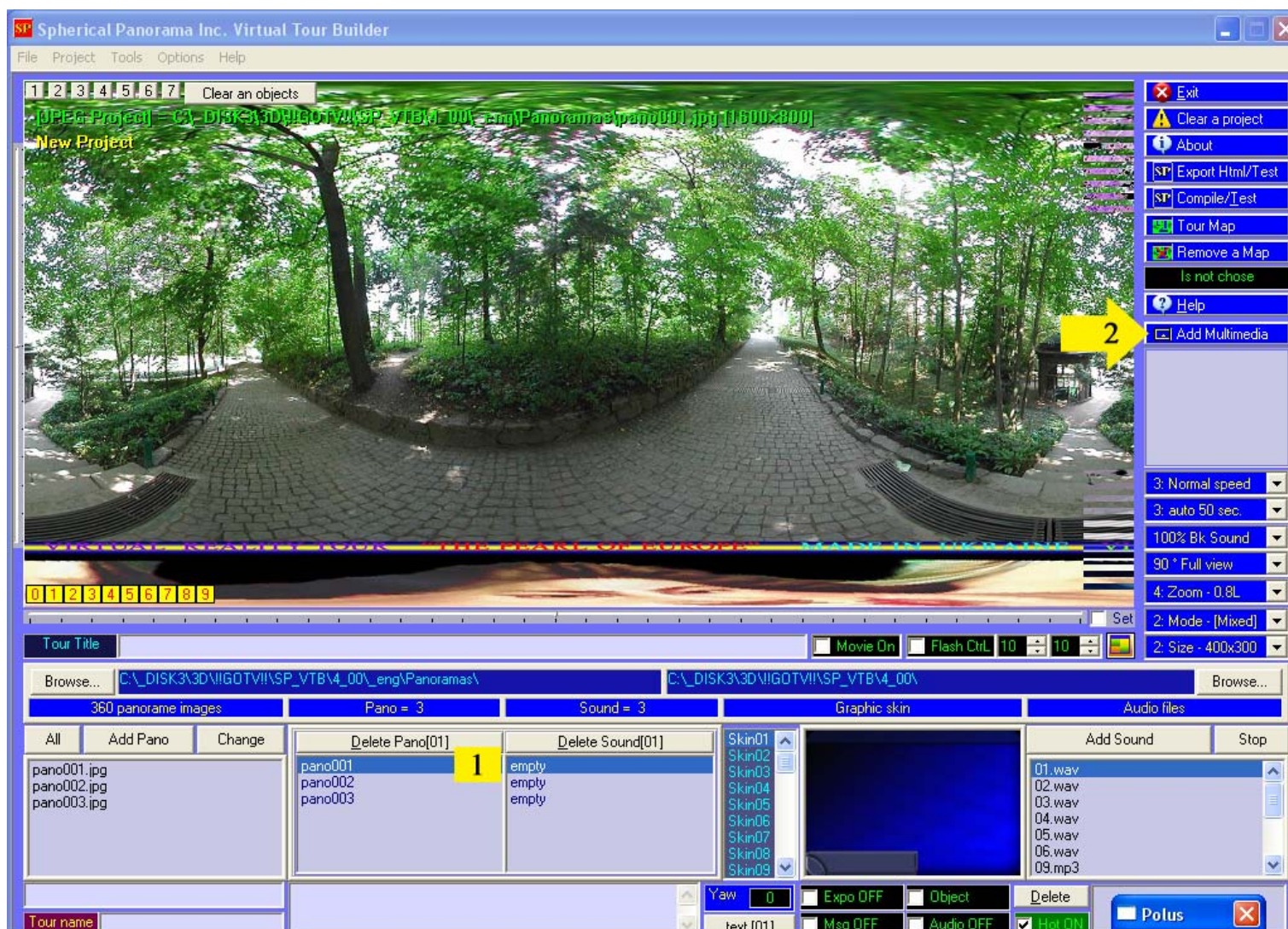
This document explains the installation and operation of Spherical Panorama Virtual Tour Builder. It is intended for both newbies and professionals who engage in virtual tour building.

## How to place AVI, MPG movie in transition (for executable only)

First of all, you need to add all panoramas to a project.

See "Yellow" marked areas (see attached images):

1. Choose a panorama, where you will place the AVI, MPG movie. (You can add in the current transition only one movie. One transition on panorama – one movie)
2. Press the button "Add multimedia"



## How to place AVI, MPG movie in transition (for executable only)

page 2

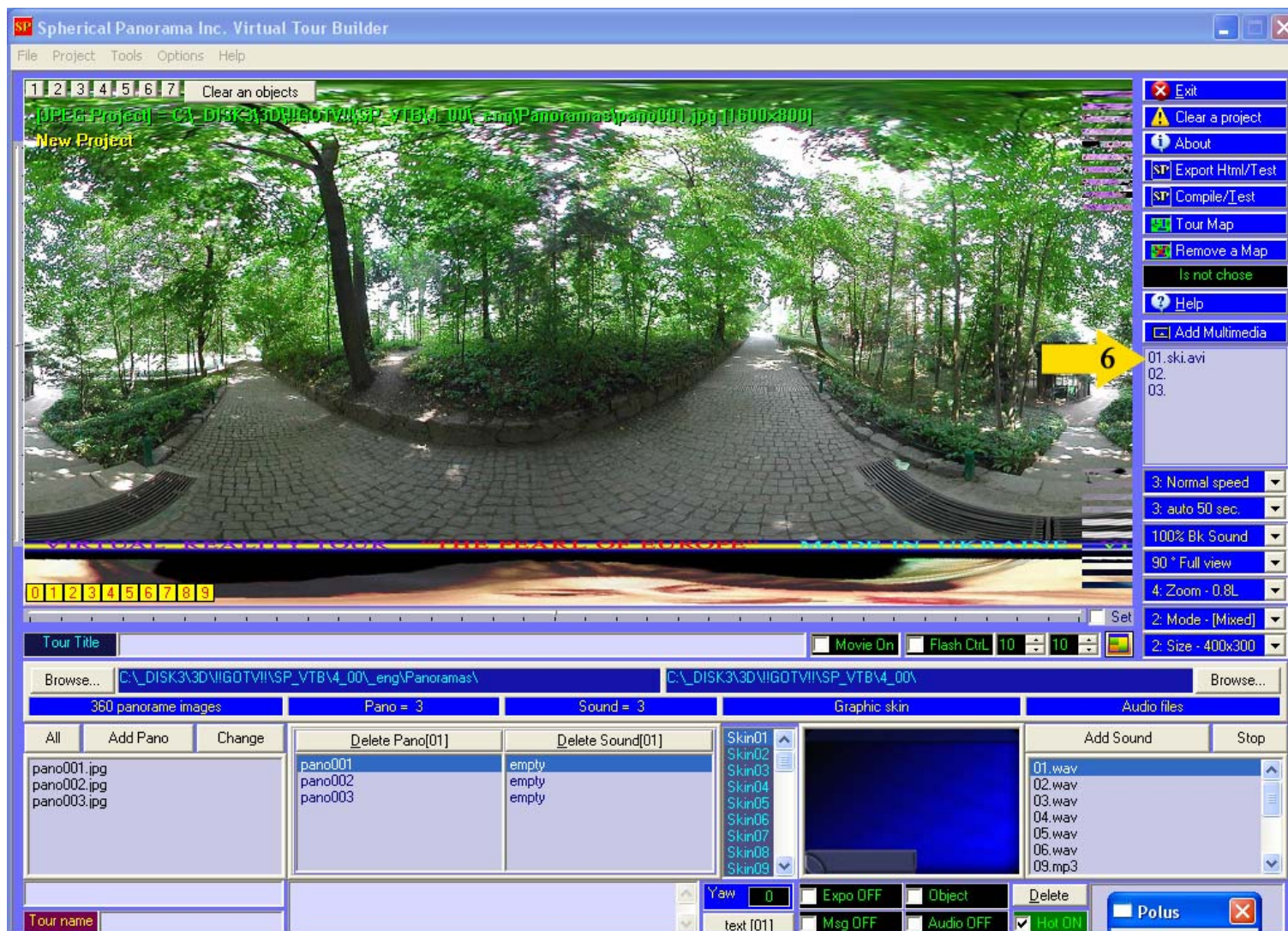
3. Choose any movie from current folder.
4. Preview it, if you need. (Press the button “Preview”)
5. Add the movie to transition on current panorama. Press the button “Ok”



## How to place AVI, MPG movie in transition (for executable only)

page 3

6. See multimedia list, where attached movie



-----  
And so on for next panorama (go to item 1.)

**Note:** AVI, Mpg Multimedia files can have very large size. So, ready, executable virtual tour contains only links to video files. And you need to add AVI, Mpg files in manual mode, directly copy them to the root folder of the virtual tour.

How it works: when you choose a concrete panorama in the virtual tour, then previously will load movie for transition. And after, viewer will load panorama image.