

## How to place Object (object Hot Spot)

page 1

\* The software is constantly updated. And may contain features not documented in this document.

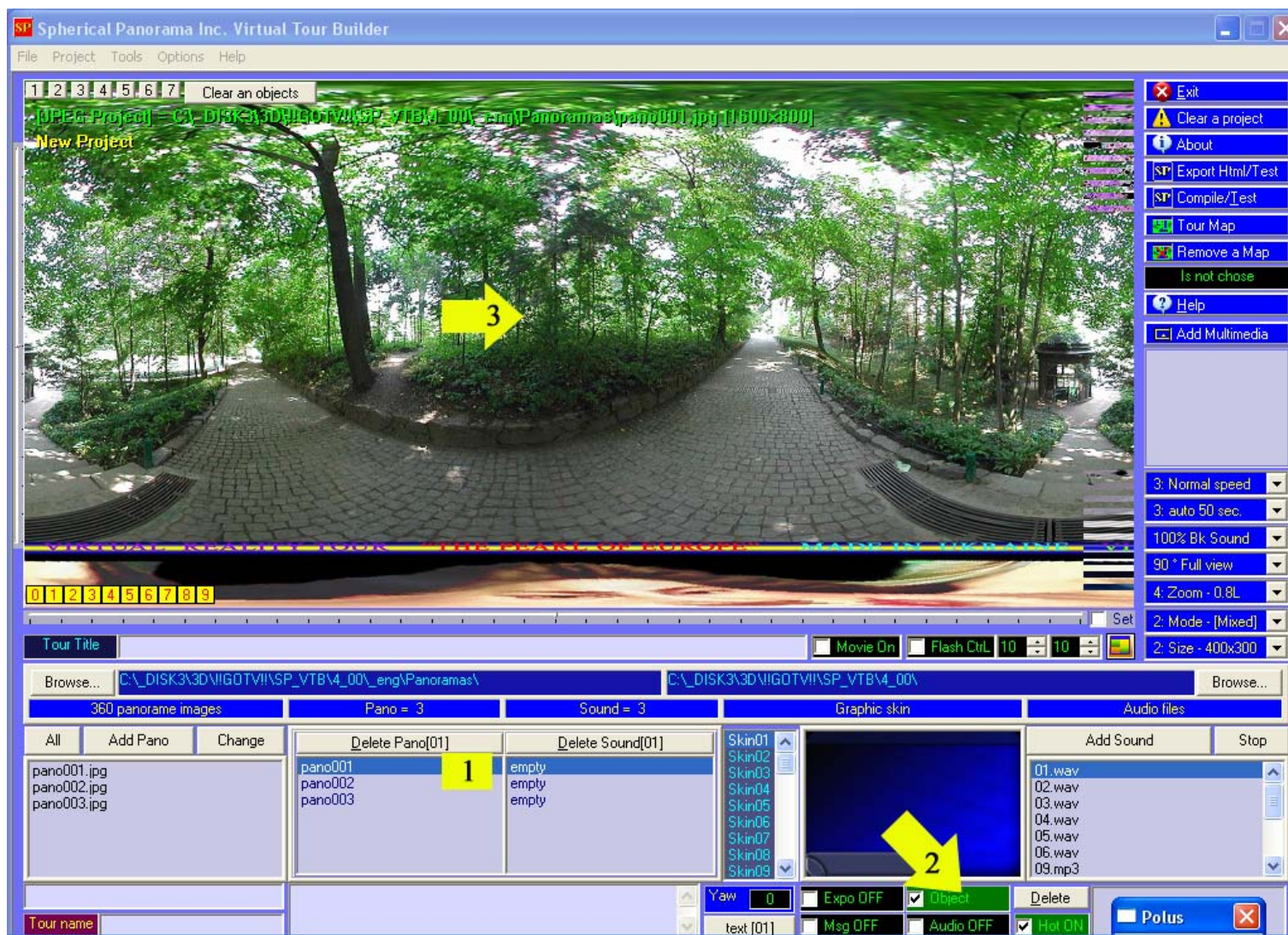
This document explains the installation and operation of Spherical Panorama Virtual Tour Builder. It is intended for both newbies and professionals who engage in virtual tour building.

## How to place Object (object Hot Spot)

First of all, you need to add all panoramas to a project.

See "Yellow" marked areas (see attached images):

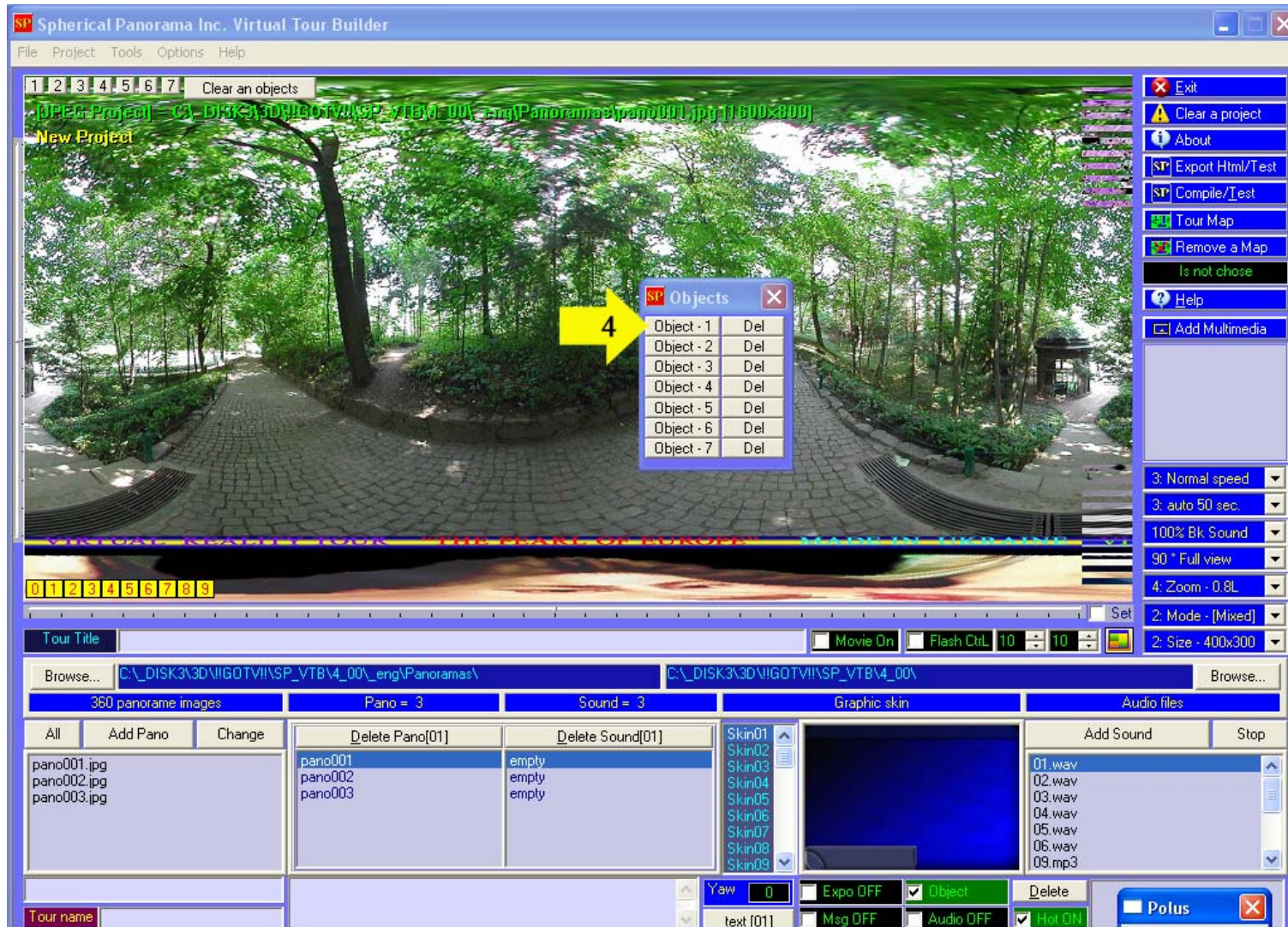
1. Choose a panorama, where you will place the "Video point".
2. Select/Checked the active area "Object"
3. Choose a place of the "Object" by mouse (press the Left mouse button)





## How to place Object (object Hot Spot)

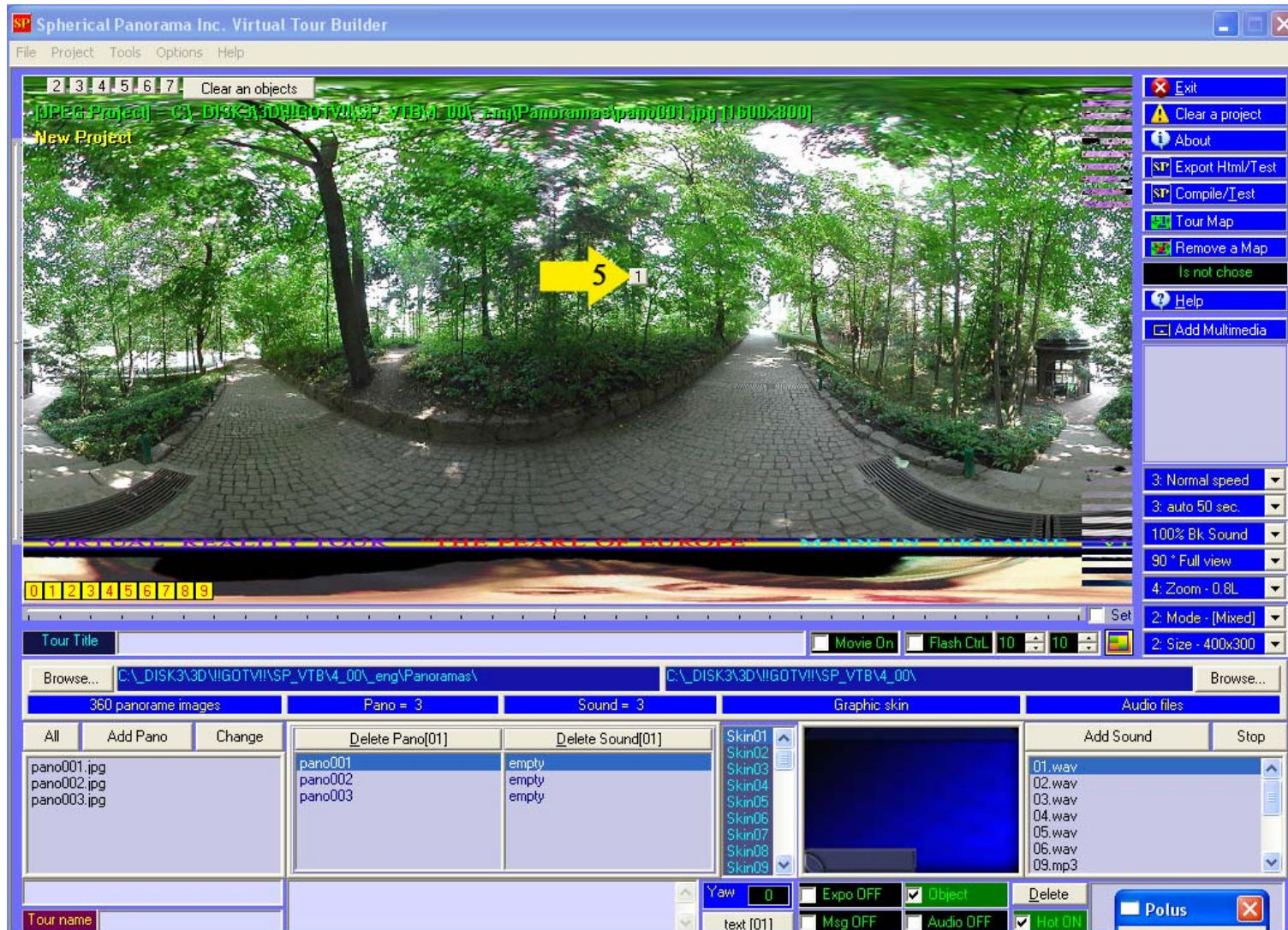
4. Press the button “Object ...” (any not occupied the button)





# How to place Object (object Hot Spot)

5. Add for current hot spot an object – press the button (current specified the button)





## How to place Object (object Hot Spot)

page 4

6. Choose an Object (Jpeg, AVI, MPG ...) in Object List
7. Input the "Title" for selected object
8. Input the text for Object (If you need it)
9. Press the button "OK"

-----  
And so on for next Object hot spot (go to item 3.)

