

## How to place Video Point (animation Hot Spot)

page 1

\* The software is constantly updated. And may contain features not documented in this document.

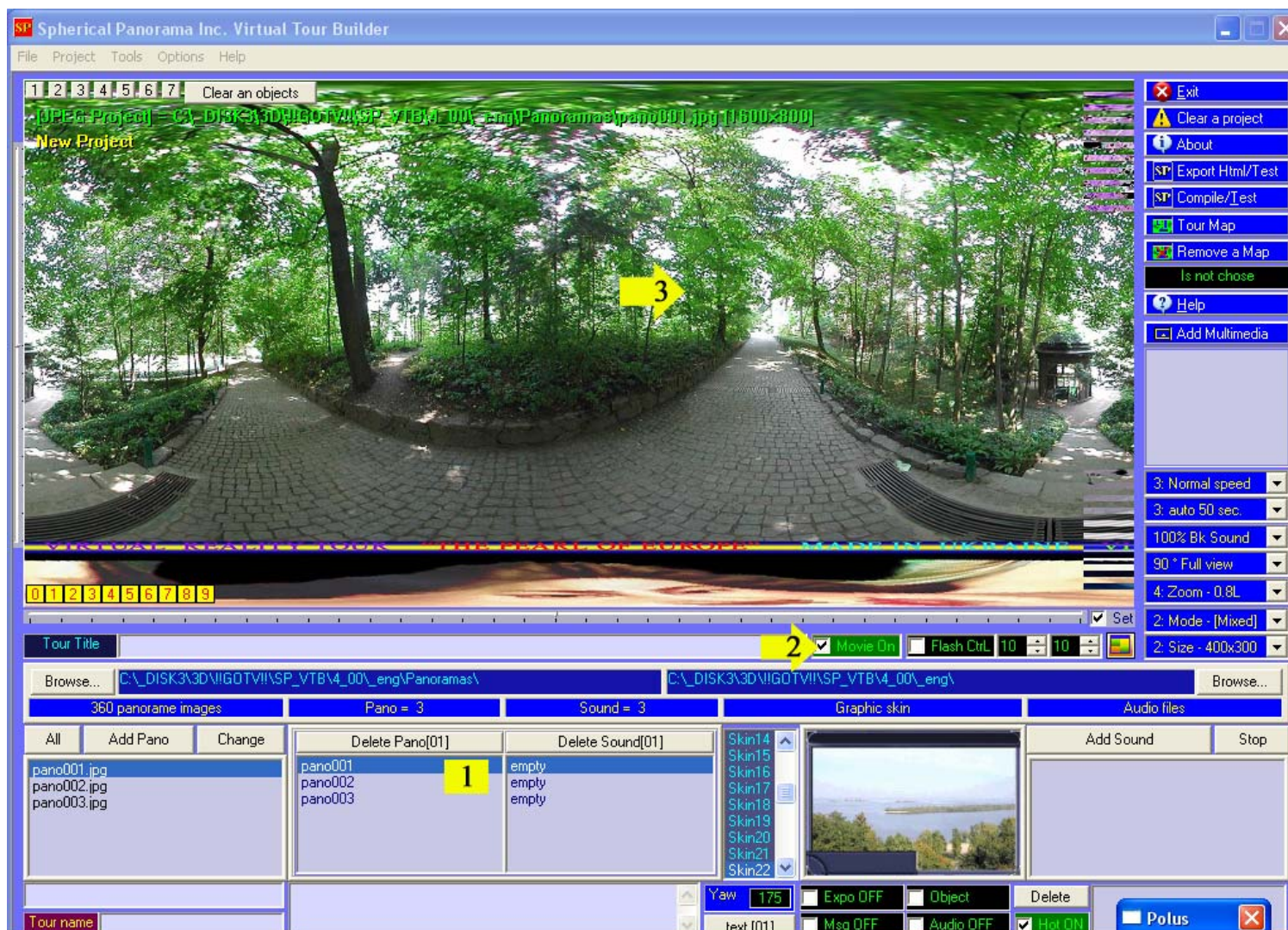
This document explains the installation and operation of Spherical Panorama Virtual Tour Builder. It is intended for both newbies and professionals who engage in virtual tour building.

## How to place “Video point” (animation Hot Spot)

First of all, you need to add all panoramas to a project.

See "Yellow" marked areas (see attached images):

1. Choose a panorama, where you will place the “Video point”.
2. Select/Checked the active area “Movie On”
3. Choose a place of the “Video point” by mouse (press the Left mouse button)





## How to place Video Point (animation Hot Spot)

4. If you need, then select/checked “Zoom” area for chosen “Video point”
5. Press the button “Point ...”

-----  
And so on for next video point (go to item 3.)

