

How to place Hot Spot

page 1

* The software is constantly updated. And may contain features not documented in this document.

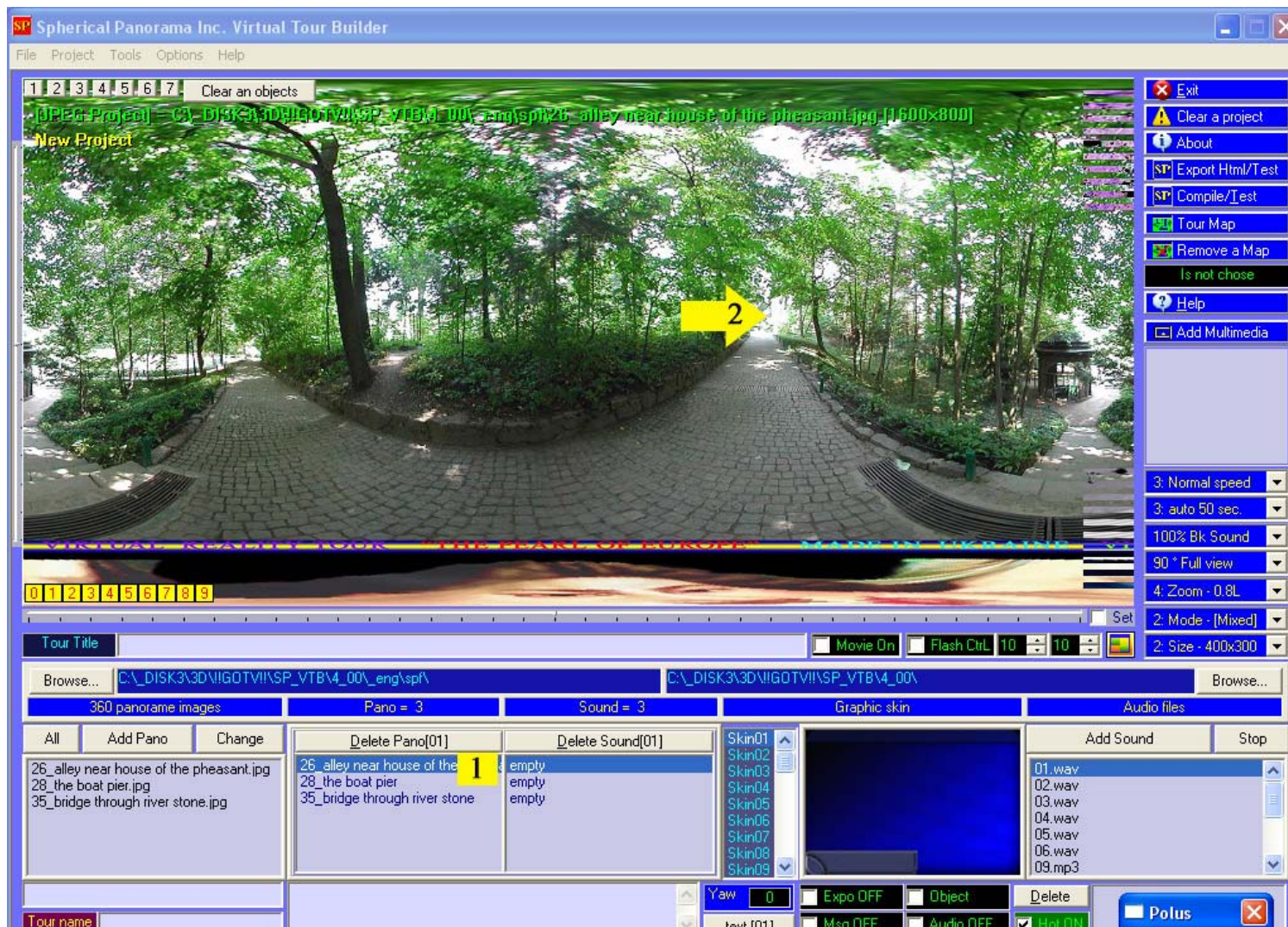
This document explains the installation and operation of Spherical Panorama Virtual Tour Builder. It is intended for both newbies and professionals who engage in virtual tour building.

How to place Hot Spot

First of all, you need to add all panoramas to a project.

See "Yellow" marked areas (see attached images):

1. Choose a panorama, where you will place hotspots.
2. Choose a place of hotspot by mouse (press the right mouse button)

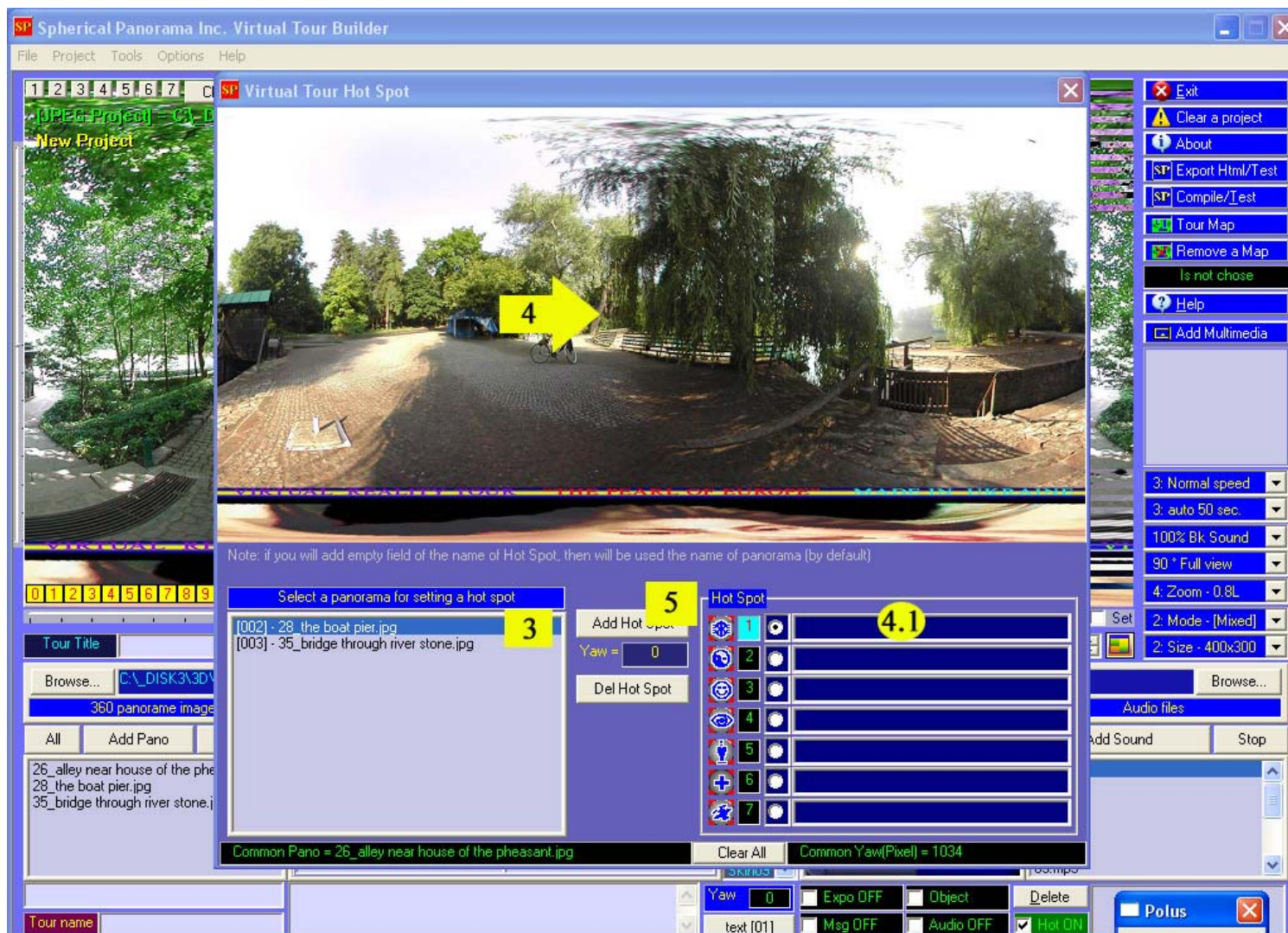


How to place Hot Spot

page 2

3. Choose any panorama from a project for hotspot
4. Choose a place on hotspot panorama for initial angle of viewing (press the left mouse button)
5. Press the button "Add hot spot"

 And so on for next hotspot (go to item 2.)



If you need, then you can change name of hotspot:

- 4.1 Change/Add the new name of hot spot in selected textbox
5. Press the button "Add hot spot"

 And so on for next hotspot (go to item 2.)